

# LPG STORAGE TANKS

FOR SAFE STORAGE OF LPG







# LPG STORAGE TANKS



We manufacture LPG storage tanks in overground and underground versions. Our tanks meet the requirements of European Pressure Equipment Directive 97/23/EC. The tanks are **CE 1017** marked.

Our storage tanks can be used for domestic heating purposes, for LPG automotive filling and industrial applications.

Our company has 4 special trucks for delivery of storage tanks, three of them are equipped with hydraulic manipulator. Our fleet is specially designed to have the maximum loading capacity.

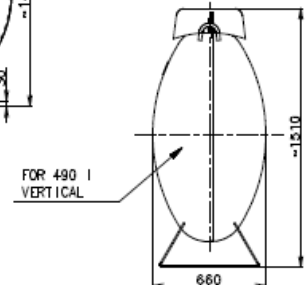
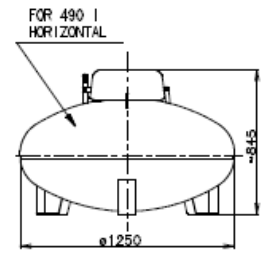
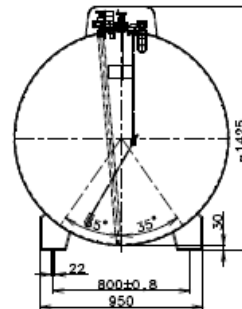
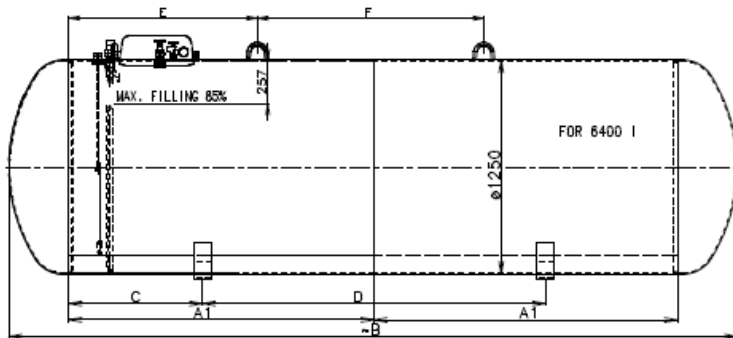


**CE 1017**

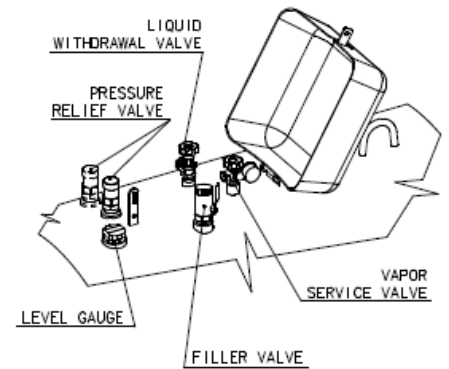
Capacities	500 - 100 000 liters
Outer diameters	Standard D 1250 / 1600 / 2000 mm. Other: 800 / 1000 / 2500 mm
Operating pressure	15,6 bar (other pressures possible)
Test pressure	25 bar
Operating temperature	-20/+40 °C or -40/+40 °C
Medium	Liquefied gas DIN 51622 / EN 589
Manufacturing standard	AD-Merkblatt 2000
Regulation compliance	European Pressure Equipment Directive 97/23/EC, modules B/G + D



# LPG STORAGE TANKS – OVERGROUND



SIZE [litre]	A1 [mm]	A2 [mm]	NUMBER A	B [mm]	C [mm]	D [mm]	E [mm]	F [mm]	WEIGH (kg)
490 VERTICAL	-	-	-	-660	-	400	300	600	185
490 HORIZONTAL	-	-	-	~1250	-	120°	226,5	453	180
990	400	-	1	~1100	200	812	-130	660	270
1600	890	-	1	~1590	90	710	230	1400	370
2100	1260	-	1	~1960	90	1080	230	1710	423
2700	1780	-	1	~2480	90	1600	960	-	470
3600	2500	-	1	~3200	150	2200	1100	-	640
4800	1780	-	2	~4250	780	2000	1100	1320	755
6400	1780	1250	3	~5500	1060	2700	1100	2600	970
7000	1780	-	3	~6020	1310	2700	1300	2600	1120
9100	1780	-	4	~7790	545	2x2900	2050	3000	1350
10000	1780	1250	5	~8520	1130	2x2900	2350	3400	1500
11200	1780	-	5	~9560	1530	2x2900	2750	3300	1705



## Materials

Bottom: thickness 5,7mm, S355J2+N AD/W1; P355N according to DIN 28013

## Welded joints

Evaluation AD-HP0

## Surface finish

Sand blasted 3.2 and polyurethane painting ≥ 0,120mm, RAL 9010 or RAL 6019

## Valves

REGO / SRG / OMECA standard pressure equipment (manual handle-off filler valve, service valve, liquid service

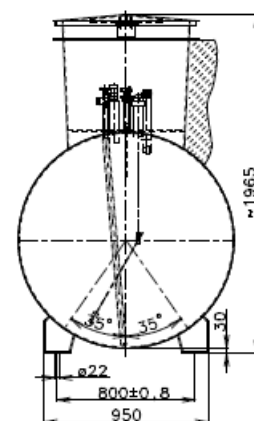
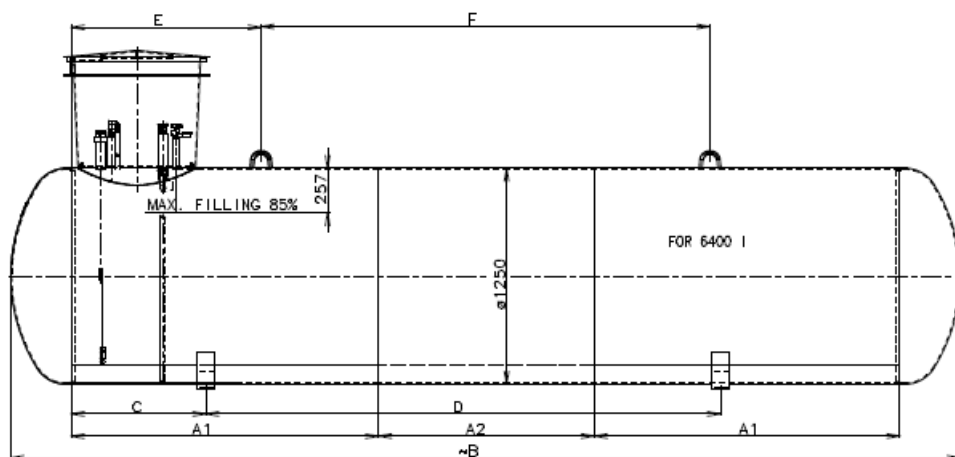


**Multivalve REGO or OMECA** combines double back check filler valve, vapour equalizing valve with excess flow, pressure relief valve, service shut-off valve, Junior level gauge and pressure gauge. Additionally installed is liquid service valve.

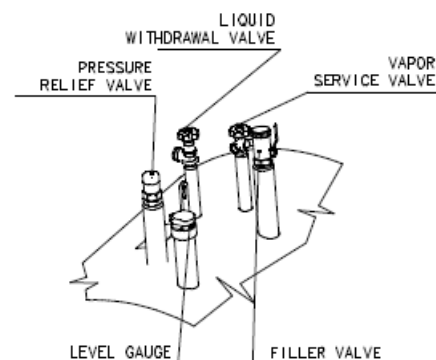




# LPG STORAGE TANKS - UNDERGROUND



SIZE [litre]	A1 [mm]	A2 [mm]	NUMBER A	B [mm]	C [mm]	D [mm]	E [mm]	F [mm]	WEIGH (kg)
2100	1260	—	1	~1960	90	1080	230	1710	433
2700	1780	—	1	~2480	90	1600	960	—	480
4800	1780	—	2	~4250	780	2000	1100	1320	765
6400	1780	1250	3	~5500	1060	2700	1100	2600	980
7000	1780	—	3	~6020	1310	2700	1300	2600	1130
9100	1780	—	4	~7790	545	2x2900	2050	3000	1360
10000	1780	1250	5	~8520	1130	2x2900	2200	3400	1510
11200	1780	—	5	~9560	1530	2x2900	2750	3300	1715



## Materials

Bottom: thickness 5,7mm, S355J2+N AD/W1; P355N according to DIN 28013

## Welded joints

Evaluation AD-HPO

## Surface finish

Sand blasted 3.2 and epoxy anticorrosive coating 1000µm, according to DIN 4681/3, ISO test 25KV

## Fittings

REGO / SRG / OMECA Standard pressure equipment, stainless steel or plastic cap



We offer underground tanks standardly with robust plastic caps or on request with stainless steel caps.

**KADATEC s.r.o.**

Industrial zone

257 64 Zdislavice

Czech Republic

Phone: +420 317 705 090

Fax: +420 317 705 071

Mobile: +420 724 850 696

Mailto: [kadatec@kadatec.cz](mailto:kadatec@kadatec.cz)

**[www.kadatec.cz](http://www.kadatec.cz)**

